



CHRIS & CHRISTIANE  
**FOUNDATION**

“A world where every destitute child can dream, learn, and thrive in an environment of harmony.”



**Empowerment** by  
*Leadership, Compassion  
& Inclusion.*

Transforming Lives, **Fostering Unity**

## **OUTLINE**

- 1. Founders' Note**
- 2. Introduction**
- 3. Our Ethos: Vision, Mission and Values**
- 4. Our Commitment**
- 5. Our Beneficiaries**
- 6. Our Focus Areas**
- 7. Programs and Initiatives**
- 8. Impact and Achievements**
- 9. How to Support**
- 10. Contact Information**



CHRIS & CHRISTIANE  
**FOUNDATION**



**Empowerment by  
Leadership, Compassion  
& Inclusion.**



## **Chris' Story:**

*"I come from, as many Nigerians do, a humble background. I learned to navigate Lagos streets at almost the same time I learned to walk.*

*Reaching the peak of my career as a successful finance executive is nothing short of God's grace and access to the right opportunities. That is the goal! Every child should be empowered to achieve their dreams.*

## **FOUNDER'S NOTE**

Our journey began with a simple dream that is deeply personal to us, for we too have faced our share of adversity. Our aim, right from the start, was to make the world a better place, a place where every person, regardless of their circumstances, can thrive and find hope.

We married for love despite religious differences and through our union we built understanding, support and respect for each other's different faith backgrounds.

We have witnessed firsthand the power and beauty of religious tolerance and interfaith harmony. This foundation is more than an organization; it is a manifestation of our values and beliefs, a reflection of our shared commitment to creating a more inclusive, brighter world.

As we stand at the helm of this incredible endeavour, we are reminded that the essence of our work lies not only in the causes we champion but in the collective energy and shared dreams of the people who support us.

Together, we seek to work closely with local and international partners,

organisations, and communities to leverage collective knowledge and resources to support our foundation's scholars and beneficiaries. Our projects are designed with long-term impact in mind, addressing the root causes of the issues we aim to resolve. We maintain the highest standards of financial transparency and governance, ensuring that our donors have confidence in our work.

With your support, we can make the world a better place, one step at a time, one life at a time.

Thank you for being a part of this journey

**Chris and Lola (Christiane) Oshiafi.**



**Lola's (Christiane) Story:**

*"I have experienced firsthand the challenges life can throw at you as an orphan. Growing up in a world without parents to nurture me into adulthood was an incredible adversity. However, against all odds, I rose to the top of my profession as a banker in Nigeria. This journey has shaped my perspective, and through this lens, the mission of our foundation is deeply personal. One of our goals is to serve and empower orphans and under-privileged youth, a cause that we are profoundly passionate about. Just as I overcame adversity, our foundation strives to provide hope and opportunities for those facing similar challenges."*

### 3. FOUNDATION ETHOS



#### Our Vision:

We envision a world where every orphan and underprivileged youth, from all backgrounds and regardless of their circumstances, can dream, learn, and thrive in a world that embraces religious tolerance and interfaith harmony.

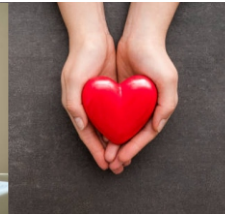
#### Our Mission:

We are dedicated to nurturing the aspirations of orphans and marginalized youths, providing them with the tools, resources, and opportunities they need to achieve their full potential while fostering unity and tolerance through religious and interfaith initiatives.

### OUR VALUES



**Leadership**




**Compassion**



**Inclusion**

- R - Respect:** We treat everyone with dignity and respect, regardless of their background or beliefs.
- E - Empowerment:** We believe in providing the tools and opportunities that allow individuals to take control of their destinies.
- C - Compassion:** We approach our work with empathy and kindness, recognizing the unique challenges faced by our beneficiaries.
- I - Integrity:** We are committed to transparency and accountability in our operations and stewardship of resources.
- I - Inclusivity:** We are dedicated to serving individuals from diverse backgrounds and beliefs, regardless of race, religion,
- T - Tolerance:** We respect diversity and jointly promote harmony between religions, or nationality.
- E - Education:** We empower individuals to expand their horizons and contribute meaningfully to society through comprehensive educational initiatives.



I am,  
because we are.  
Because we are,  
therefore, I am.

## 4. OUR COMMITMENT

Our foundation is guided by the belief that together, we can create a more tolerant and inclusive Nigeria where every individual is allowed to thrive, and where the values of compassion and understanding prevail. Through our unwavering commitment, we strive to make this belief a reality.

## 5. OUR FOCUS AREAS



### EDUCATION

We believe that education is the cornerstone of personal growth and societal progress. We provide access to quality education and resources to equip our beneficiaries with the knowledge and skills they need to shape their futures.



### EMPOWERMENT

We are committed to empowering orphans and under-privileged youths in Nigeria through education, mentorship, skill development, and access to opportunities, enabling them to break the cycle of poverty and inequality.



### RELIGIOUS TOLERANCE & INTER-FAITH UNDERSTANDING

We aim to bridge divides among different religious communities in Nigeria through programs that encourage dialogue, mutual respect, and understanding. We work to ensure that our principles of empowerment, religious tolerance, education and reach our beneficiaries everywhere there is a need.

## 6. OUR BENEFICIARIES

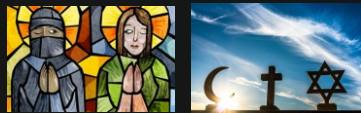
### Orphaned & Under-privileged Nigerian Children/Youth



Children are our future, and we are dedicated to ensuring they have every opportunity to thrive.

The Chris and Christine Foundation focuses on providing nutrition and shelter to orphaned and vulnerable children, offering education, mentorship and guidance for personal growth and development.

### Religious Institutions



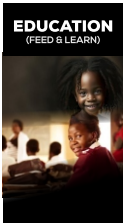
We are committed to supporting religious institutions that promote religious tolerance, provide moral guidance and encourage community cohesion in the nuanced and sensitive world we live in.



# 7. PROGRAMMES & INITIATIVES

## A. Empowering Orphans and Underprivileged Youths

Our core program focuses on providing orphans, disadvantaged, and marginalized youths with the necessary support, resources, and opportunities for personal development, education, and vocational training in Nigeria. This includes:



**Scholarship Programmes:** We offer scholarships for formal education, vocational training, and higher education.

**Mentorship:** We provide mentorship and counseling to help young people make informed choices and set achievable goals.

**Skills Development:** We offer vocational training and job placement services to enhance employability.

**Community Support:** We foster a sense of belonging and support by building and renovating shelters, orphanages, and community centers.

## B. Promoting Religious Tolerance

Our second major initiative is to promote religious tolerance and interfaith understanding. We achieve this by:



**Supporting Pilgrimage:** We sponsor individuals from diverse faith backgrounds to undertake pilgrimages to promote cultural and religious understanding.

**Training Support for Religious Leadership/ Theological Studies:** We offer training and education for individuals pursuing a career as religious leaders, emphasizing interfaith dialogue and peaceful coexistence. By providing resources and scholarships, we enable aspiring priests to develop the knowledge and wisdom needed to guide their communities toward peaceful coexistence.

**Interfaith Dialogue:** We organize events, workshops, and educational programs that facilitate dialogue and understanding among people of different faiths.

## C. Community Outreach Programmes:

The foundation organizes community outreach programs to provide food, clothing, and other essential items to orphans and less privileged/marginalized youths in Nigeria.

## 8. IMPACT & ACHIEVEMENTS

Over the years, the **Chris & Christiane Foundation** has made a significant impact on the lives of countless individuals. Some of our key achievements include:

- **Empowering orphans and less privileged youths with education and vocational skills.**
- **Sponsoring pilgrimages for individuals from various faiths, promoting mutual respect and understanding.**
- **Training and supporting priests and religious leaders dedicated to fostering religious tolerance and interfaith dialogue.**
- **Conducting numerous interfaith events and workshops to bring communities together.**

## 9. HOW TO GET INVOLVED:

There are many ways to get involved with the foundation and support its mission. We rely on the support of individuals, corporations, and philanthropic organizations to continue our work. You can support us by:

- **Donating to the foundation or becoming a sponsor.**
- **Volunteering your time and expertise.**
- **Collaborating on projects or initiatives.**
- **Spreading the word about our foundation and mission.**

To learn more about how you can support our cause, please visit our website or contact us directly. We welcome collaboration and invite potential partners who share our vision and values to join us in our efforts.

Join us in our mission to empower the under-privileged, foster religious tolerance, and create a brighter future for all in Nigeria. Together, we can make a lasting difference in the lives of those who need it most and promote unity in diversity.





**CHRIS & CHRISTIANE  
FOUNDATION**

## A Brief Snapshot About Our Founders

Chris and Lola (Christiane) Oshiafi bring a wealth of expertise and experience from running successful businesses to the fore.

Chris has over two decades of structured finance and Investment Banking experience. He is an Alumnus of the Harvard Business School, Boston MA, USA and is currently the Group Chief Executive Officer of PanAfrican Capital Holdings - a proprietary Investment company with business interests in several key sectors. He is currently on the Board of Oakwood Africa - owner of Bloom Bank in Liberia, Sierra Leone and Gambia, and the Chairman, Board of Trustees of PAC Foundation.

Lola is the Group Managing Director of Truebond Group - a leading conglomerate in Africa with offices in Nigeria. She is an experienced banker, with over 25 years of cognate experience in the financial industry and an active participant in the insurance sub-sector.

They both possess a strong sense of purpose from carrying out personal philanthropic efforts as they support other charities and NGO's.

Their passion and dedication have led to the establishment of the **Chris and Christiane Foundation**, enabling them to help more children and youth and promote inter-faith harmony on a larger scale. Our founders are channeling their passion into a wide range of initiatives that make a significant impact.

*See their full Bio's on our website.*

## CONTACT INFORMATION

### CONTACT

 22 Oniru Way,  
Victoria Island,  
Lagos, Nigeria.

 +234 (0) 805 773 7282

 [hello@c-c-foundation.org](mailto:hello@c-c-foundation.org)

[www.c-c-foundation.org](http://www.c-c-foundation.org)

### GET SOCIAL

@ccfoundation



**Empowerment by  
Leadership, Compassion  
& Inclusion.**




CHRIS & CHRISTIANE  
**FOUNDATION**

**Love and  
Compassion are  
necessities, not  
luxuries.**



 22 Oniru Way, Victoria Island, Lagos, Nigeria.

 +234 (0) 805 773 7282

[www.c-c-foundation.org](http://www.c-c-foundation.org)

@ccfoundation

